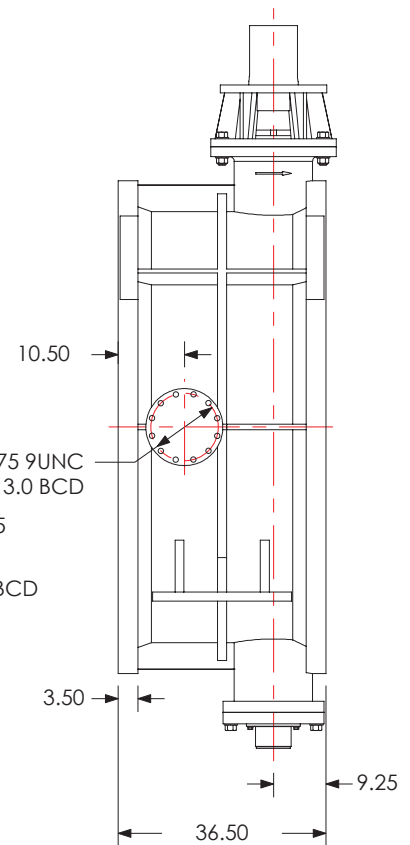
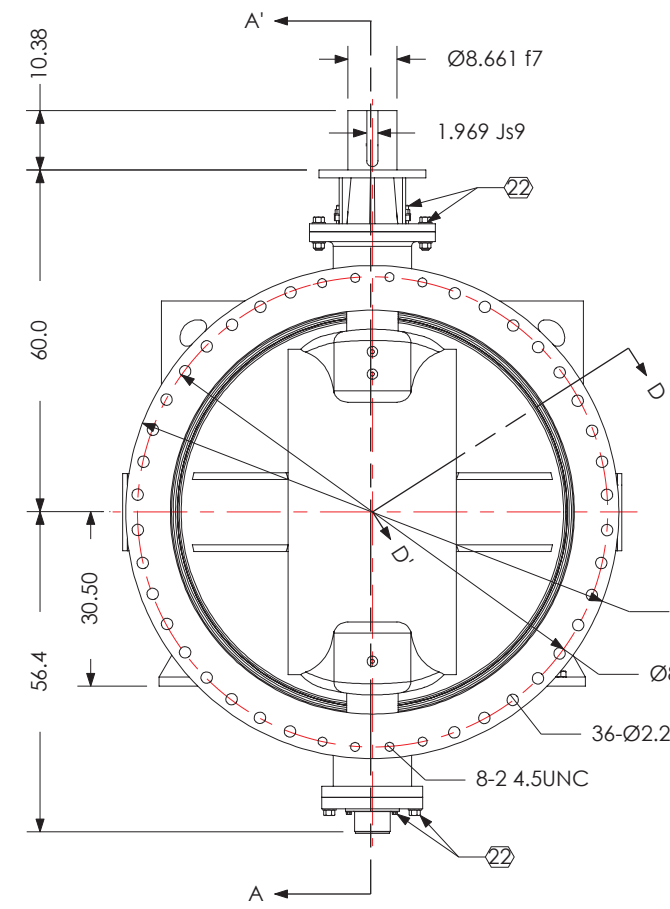
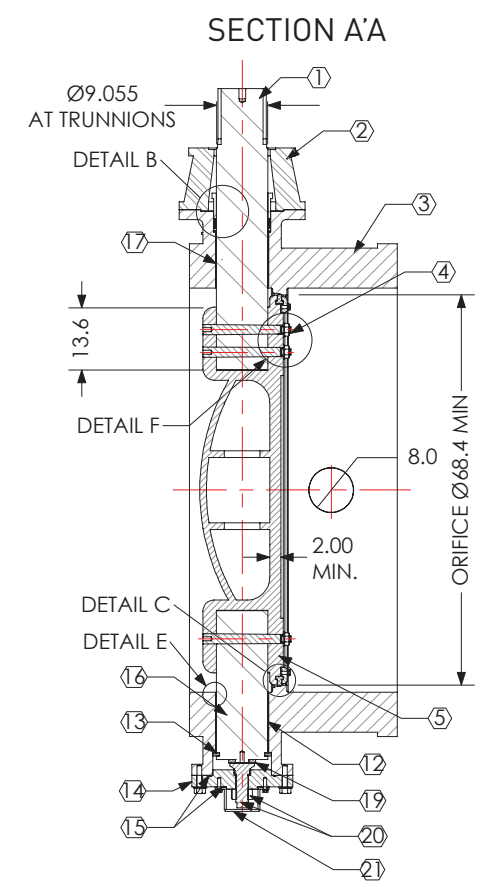
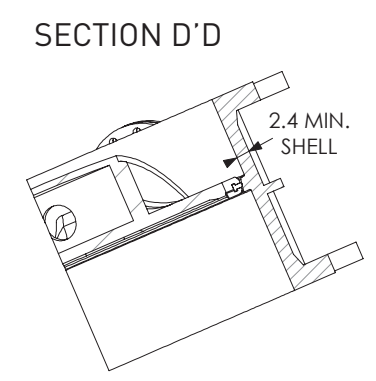
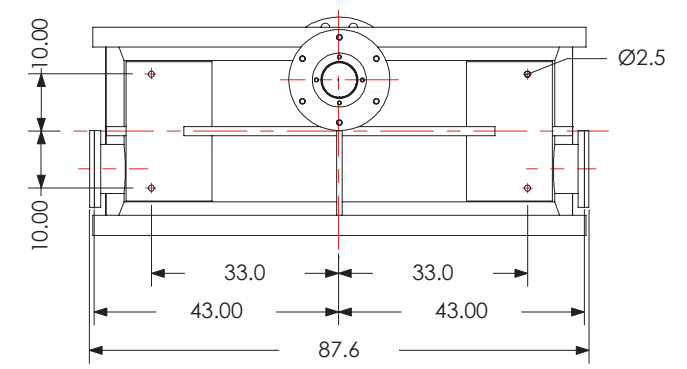
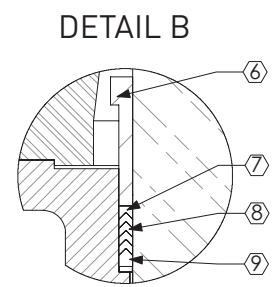


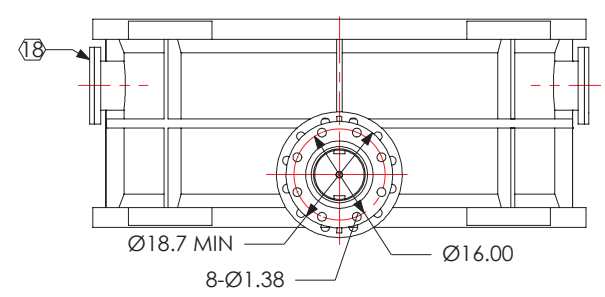
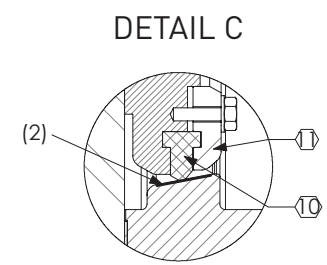
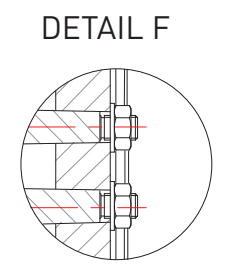
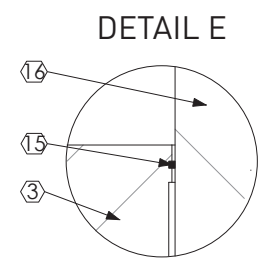
TECHNICAL SUMMARY			
VALVE IS LEFT TURN (COUNTER-CLOCKWISE) TO OPEN	DESIGN: AWWA C504(1)	CONNECTION: PER EXHIBIT A1-953-PF-1	WORKING PRESSURE: 200 psi
TESTING: AWWA C504(1)	FACE TO FACE: PER EXHIBIT A1-953-PF-1	MAX SEAT TEMP: 225° F	
INSIDE COATING: AWWA C550	OUTSIDE COATING: AWWA C550	COATINGS MEET AWWA C550	



NO	NAME	MATERIAL	COUNT
1	UPPER STEM	ASTM A564 17-4PH	1
2	BONNET	ASTM A536 65-45-12	1
3	BODY	ASTM A536 65-45-12	1
4	DISC PINS	ASTM A564 17-4PH	3
5	DISC	ASTM A536 65-45-12	1
6	PACKING GLAND	ASTM A536 65-45-12	1
7	UPPER PACKING RING	EPDM	1
8	PACKING RINGS	EPDM	4
9	LOWER PACKING RING	EPDM	1
10	SEAT	EPDM	1
11	SEAT RETAINING RING	ASTM A276 304	1
12	LOWER BUSHING	ASTM B584 C87600	1
13	SPLIT RING	ASTM A276 304	1
14	END CAP	ASTM A536 65-45-12	1
15	O-RING	EPDM	4
16	LOWER STEM	ASTM A564 17-4PH	1
17	UPPER BUSHING	ASTM B584 C87600	1
18	BYPASS PORT COVER	ASTM A536 65-45-12	2
19	THRUST BUSHING	ASTM B584 C87600	1
20	CENTERING BOLT	ASTM A276 304	1
21	PROTECTIVE COVER	ASTM A36	1
22	HARDWARE	ASTM A593 GROUP 1	-

NOTES:
 (1) AS MODIFIED BY COMPANY
 (2) WELDED ASTM A276 316 SEAT APPLIED
 IN ACCORDANCE WITH AWWA C504-10

PROJECT				
TITLE 72-INCH BUTTERFLY VALVE				
DRAWING NUM. BFIII-72LB-DIDI-316316-EPEP-BS-032713-R2				
	SCALE	NTS		A3
	UNITS	INCHES		
SHEET	1 OF 1			
DO NOT SCALE				
TOLERANCES				
DECIMAL		ANGULAR		
.X	± .1	± .25°		
.XX	± .01			
.XXX	± .005			
	NAME	SIGNATURE	DATE	NOTE
DRAWN	JBH		3/13	
CHK'D	CJK		3/13	
REVISED	JBH		3/13	ADDED DETAIL E
	JBH		3/13	ADD SHAFT PENETRATION



Valve Solutions, Inc.